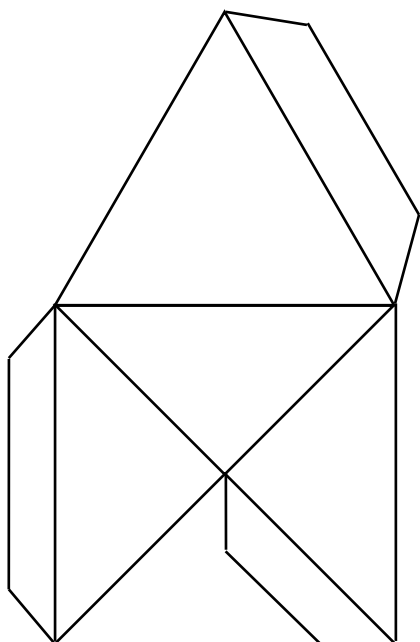


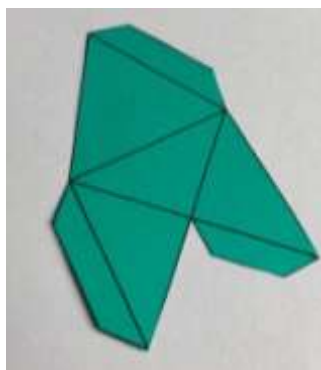
Decorated Tetrahedron Template

This tetrahedron is sized to fit the Geometiles® isosceles triangles.



Instructions

1. Print this page in Actual Size. An inkjet printer can print it directly onto cardstock. Cut out the above template above along its outer boundary.



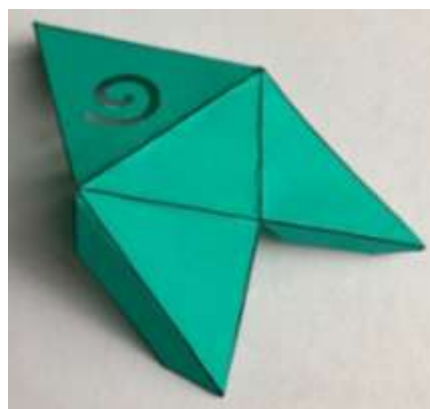
2. Fold along all the lines as shown below.



3. If desired, use a decorative hole punch to make a stenciled pattern on the large equilateral triangle. Hole punch is shown upside down in the picture below. This is so that you see exactly where the pattern is going to be made.



4. Your template should look like this.



5. Put some glue on the smallest of the three tabs and paste together.



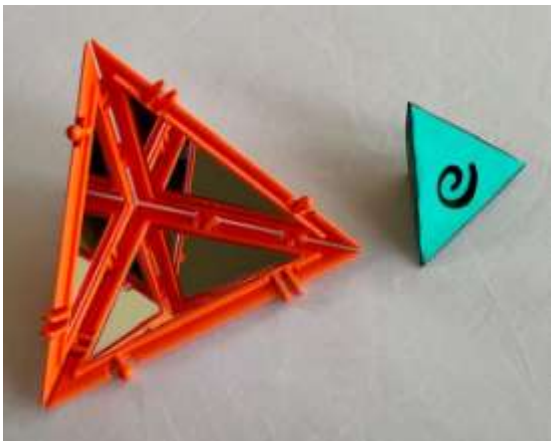
6. Apply glue to the remaining two tabs and tuck them into the interior of the tetrahedron.



7. You may need to press the edges together to ensure adhesion.



8. This is your tetrahedron and the mirrored corner into which you will place it.



9. Voila! What you see inside the mirrors is a regular octahedron. Pay attention to the direction of the swirls in different parts of the picture.

